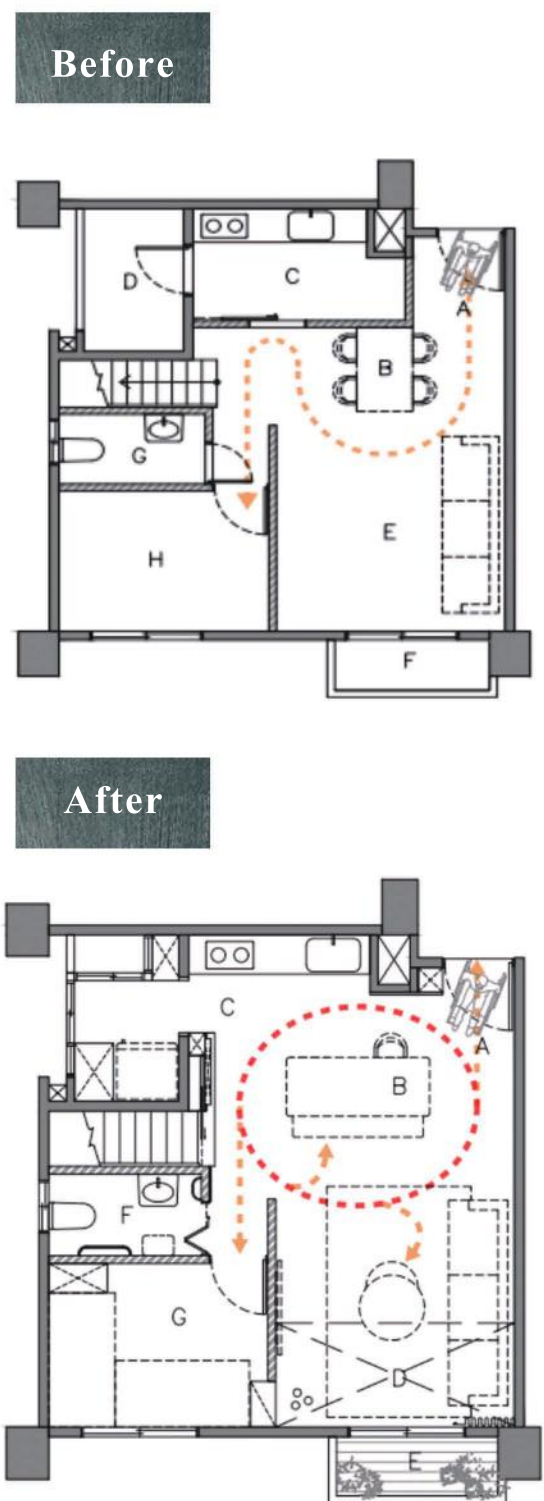




STACKING HOUSE

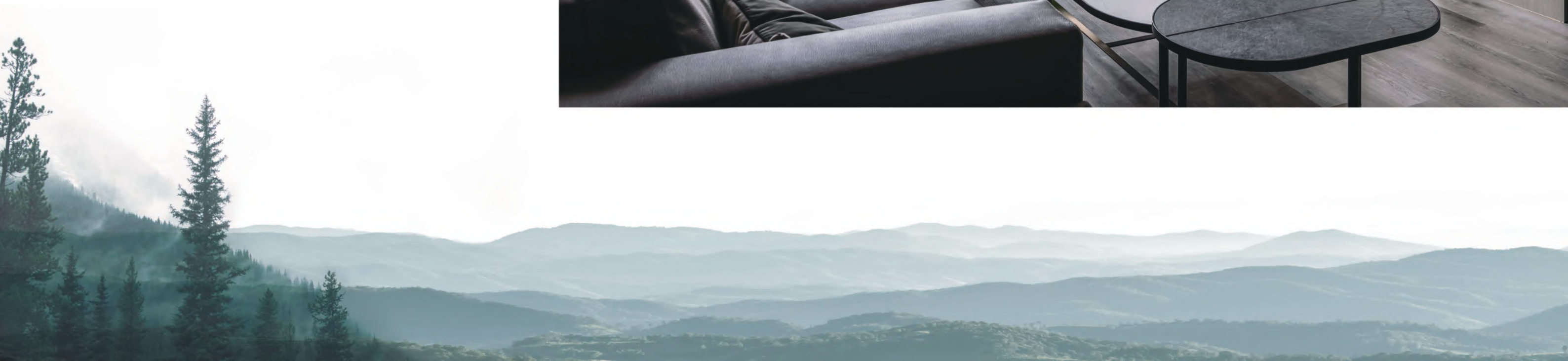
The project situated on the seaside hill slope faces the limitation of the site, 498 square-feet only. Thus an exceptional design of stacking floors comes up, becoming a building of 5, 6, and 7 floors.



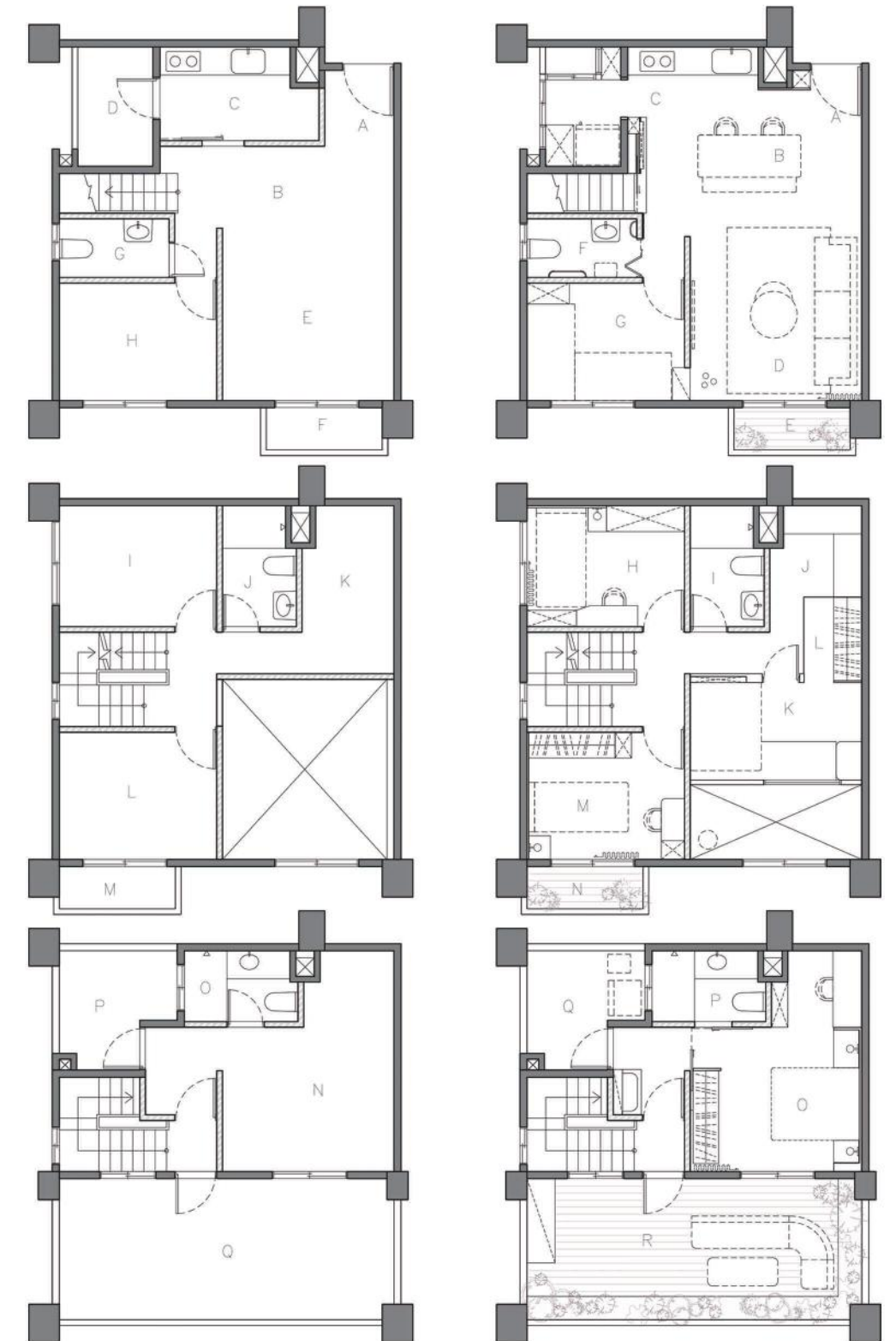
For the needs of elderly people in declining health, the family space is made barrier-free. By reconfiguring the storage, 2/3 of the area is for kitchen appliances and a refrigerator, while 1/3 becomes a balcony for the water heater. This ensures spacious pathways, over 90cm wide, from the entrance to the living room and dining area, accommodating wheelchair access. A large dining table serves communal meals.



The organic layers of mountains are transformed into vertical and horizontal lines, which are applied to the interior space.



Within this residence, a total of 5 adults cohabit, including an elderly couple, their siblings, and children. This unique housing arrangement sparks discussions on intergenerational living and cohabitation within an urban environment.



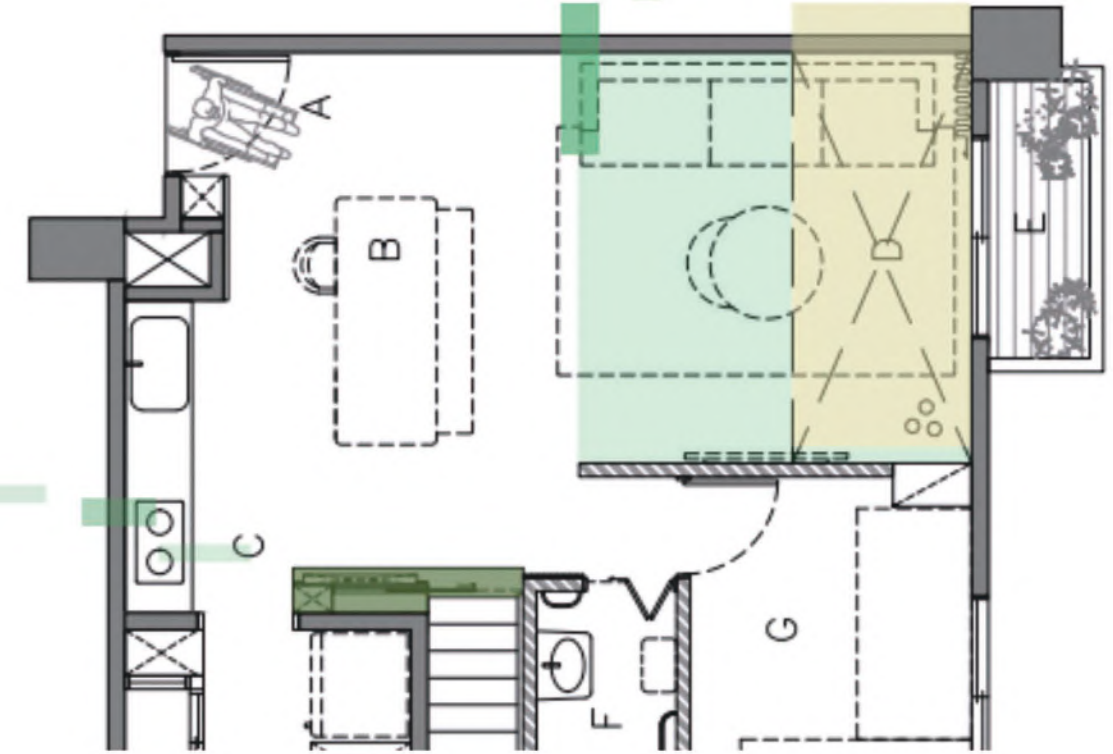


Verticality is the defining element of this space, acting as both a constraint and a catalyst for achieving seemingly unattainable goals. Drawing inspiration from the scenic views of distant mountains, the purpose behind lofty ceilings was contemplated again. The result is an expansive family space, towering vertical structures that suggest vastness, and intricate room layouts reminiscent of flourishing tree canopies, transitioning from simplicity to intricacy from bottom to top. It satisfies the yearning for a harmonious ambiance of the elderly while attending to the stylistic preferences of the younger generation.

A spatial rejuvenation is born through verticality. The living room ceiling extends towards the TV wall, mirroring the mountains it looks over. The gradually ascending ceilings foster an atmosphere reminiscent of a valley amidst mountains, in perfect harmony with the view of Keelung through the windows. To overcome the challenge of structural beams dividing the skylights and dampening the space's allure, mirrored surfaces conceal the beams. Side columns, vertical fixtures, and cohesive curtains create the illusion of merged windows. Serene earth tones enhance the ambiance, evoking a Zen-like atmosphere aligned with the family's devout beliefs.



The staircase incorporates sliding doors and a mug display cabinet, concealing the stairwell leading to the private area, so the hostess can comfortably hold gatherings for Zen practice at home.





The staircase incorporates sliding doors and a mug display cabinet, concealing the stairwell leading to the private area, so the hostess can comfortably hold gatherings for Zen practice at home.



There wasn't enough space for five rooms with high ceilings and balconies, so the designer filled in half of the ceilings with three rooms on the 6th floor. One room features a large floor-to-ceiling window to capture light, resembling the iron windows of old times and an illusion of outward views. Each room's style is tailored to the occupants' age and preferences. Rooms for the 70s generation embrace soft earth tones, and rooms for the 50s generation evoke retro industrial ambiance with materials like plain wallpaper and large black iron windows, showcasing the all-black aesthetic with molding, steel sheets, and faux stone patterned boards.



In compact spaces, the system cabinets become essential tools for multifunctional and versatile storage. The large drawer cabinets not only provide ample storage but also serve as bed frames, seamlessly extending into window-side lounges and seating areas that can also be used as desks. The bookshelves serve a dual purpose, allowing for both storage and display, while minimizing wasted depth. The design incorporates angled or rounded edges at corners to enhance visual appeal, provide smooth movement, and reduce the risk of collisions, ensuring the safety for every family member.



Taking into account the needs of vulnerable elderly and the high usage of the space, a comprehensive heat exchange system is installed for ventilation to ensure excellent indoor air quality. However, this poses the challenge of concealing over 10 equipment pipelines. To address this, the elevated area above the living room is repurposed as a spacious pipe shaft, seamlessly integrating the full heat exchange units, dehumidification system, and air conditioning system. Additionally, access points are incorporated for easy maintenance, for the goal of sustainable upkeep.

